

👋 DUG#6 Shameless Plug 👋





- 🎯 Yes, this is about marketing our products. But it's more than that.
- 🌱 **Growth & Transparency:** Showcasing our evolution and our dedication to the open-source ethos.
- 📖 **Historical Record:** For us at 3mdeb, future customers, and the privacy & security community to reflect and improve.
- 📈 **Explore Business Model:** If we will fail at least you will know what you should not do when doing open-source firmware-based business.

- Dasharo Business Model
- Hardware,
- Services,
- Dasharo Entry Subscription (aka Dasharo Pro/Enterprise Package)
- Merchandise,
- Everything available in 3mdeb shop: <https://shop.3mdeb.com>

The slide features a dark gray background with decorative circuit traces in the corners. The top-left corner shows several vertical lines that branch out horizontally and then vertically again, ending in small circles. The top-right corner shows several parallel lines that bend at a 90-degree angle to become vertical. The bottom-left corner shows a few horizontal lines that branch out and end in circles. The bottom-right corner shows a complex set of lines, including horizontal, diagonal, and vertical segments, ending in circles.

Hardware



SDWire

89,00 €
(ex. VAT)

Overview

SDWire allows to flash SD card connected to the DUT (Device Under Test), without physical contact with the device. It serves as a SD card reader and SD card mux in one device. The PCB board is designed in such a way that it fits into micro SD card slots. Thanks to this, there is no need for special cables with a micro SD adapter, like in the muxPi product.

Documentation:

- [Getting started](#)
- [Specification](#)
- [Usage](#)
- [FAQ Section](#)

179 in stock

1

ADD TO CART

Enquiry for this
product

Stock
refilled

<https://shop.3mdeb.com/shop/open-source-hardware/sdwire/>



Dasharo Asus KGPE-D16 Flash Chip Adapter

17,00 €
(ex. VAT)

Overview

Asus KGPE-D16 DIP-8 to SOIC-8 flash chip adapter with a special long pin header for WP pin jumper provides an easy way to protect the SPI flash chip. It allows to use a SOIC-8 packaged flash in the DIP-8 socket and easily place a jumper to protect the flash.

This chip comes pre-flashed with Dasharo firmware, ensuring trustworthiness, privacy, and liberty.

Documentation:

- [RTE with Asus KGPE-D16 connection Hardware Setup](#)
- [About Dasharo](#)

19 in stock

1

ADD TO CART

Enquiry for this product

<https://shop.3mdeb.com/shop/adapters/asus-kgpe-d16-flash-chip-adapter/>



TPM 2.0

25,00 €
(ex. VAT)

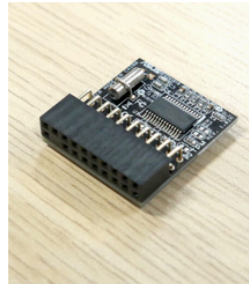
ADD TO CART



TPM 2.0 MSI MS-4462

12,00 €
(ex. VAT)

ADD TO CART

TPM Module for ASUS
KGPE-D16

19,00 €
(ex. VAT)

ADD TO CART

TPM 1.2 compatible with
Raptor Computing
Systems Talos II
mainboard

32,00 €
(ex. VAT)

ADD TO CART

Dasharo TPM 2.0 for PC
Engines APU3, APU4,
APU6

25,00 €
(ex. VAT)

ADD TO CART

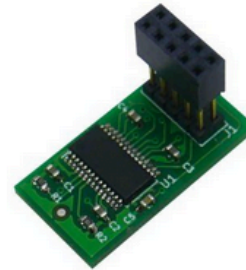
<https://shop.3mdeb.com/product-category/modules/>



Dasharo TPM 2.0 for PC
Engines APU2

25,00 €
(ex. VAT)

ADD TO CART



TPM2 module for Librebox

10,00 €
(ex. VAT)

ADD TO CART

<https://shop.3mdeb.com/product-category/modules/>



USB Power Blocker

14,00 €

(ex. VAT)

Overview

A compact and simple USB port adapter designed to block power supply by [Spacehuhn](#).

This tool comes in handy when you require a USB data connection but wish to hinder the device from charging or accessing power.

Documentation:

- [Video](#)
- [GitHub](#)

5 in stock

1

ADD TO CART

Enquiry for this product

<https://shop.3mdeb.com/shop/adapters/usb-power-blocker/>



USB Data Blocker

14,00 €

(ex. VAT)

Overview

A simple adapter that stops a USB port from transferring data by [Spacehuhn](#).

Use this tool when you only want a USB port to charge something. It's handy, especially when using public USB devices you don't trust to avoid BadUSB attacks.

Documentation:

- [Video](#)
- [GitHub](#)

5 in stock

1

ADD TO CART

Enquiry for this
product

<https://shop.3mdeb.com/shop/adapters/usb-data-blocker/>



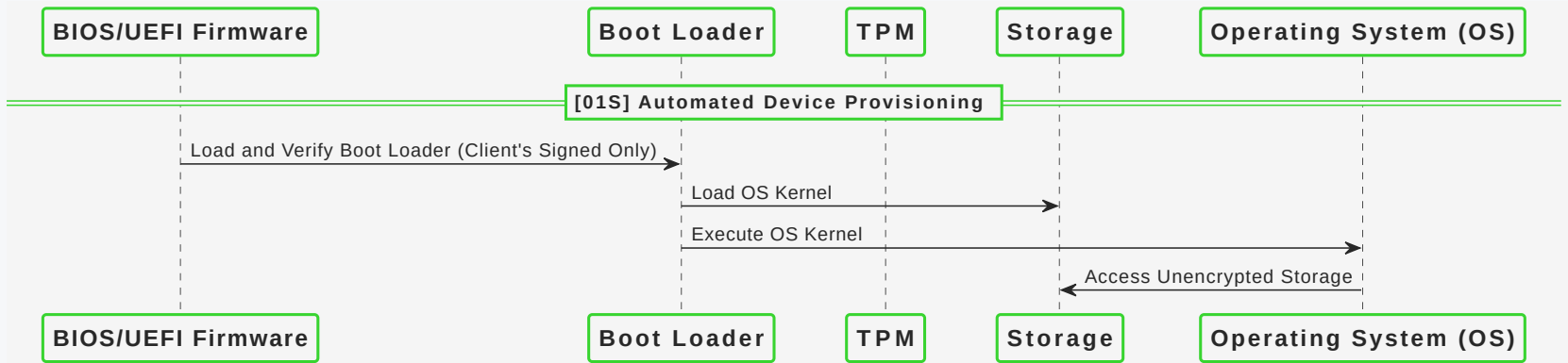
Services



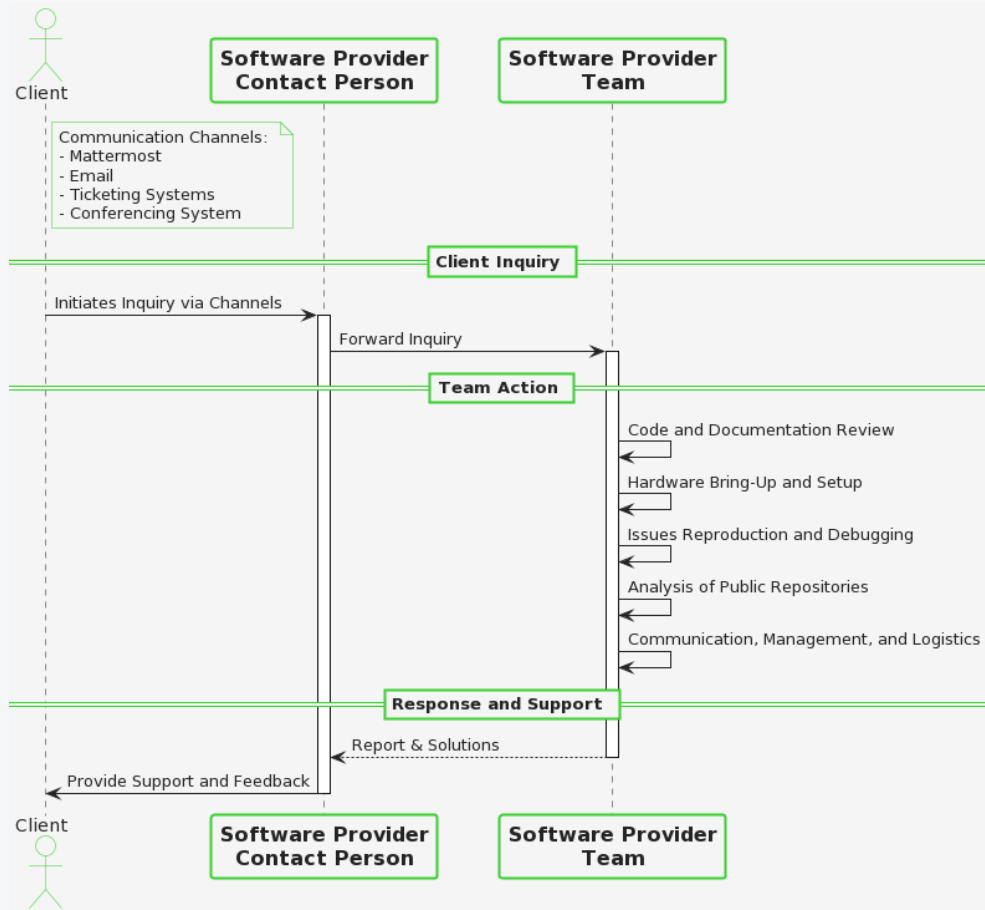
DASHARO Automated provisioning for UEFI Secure Boot



ZARHUS



<https://shop.3mdeb.com/product-category/services/>



Support Package: Dasharo Ecosystem – 10h/month

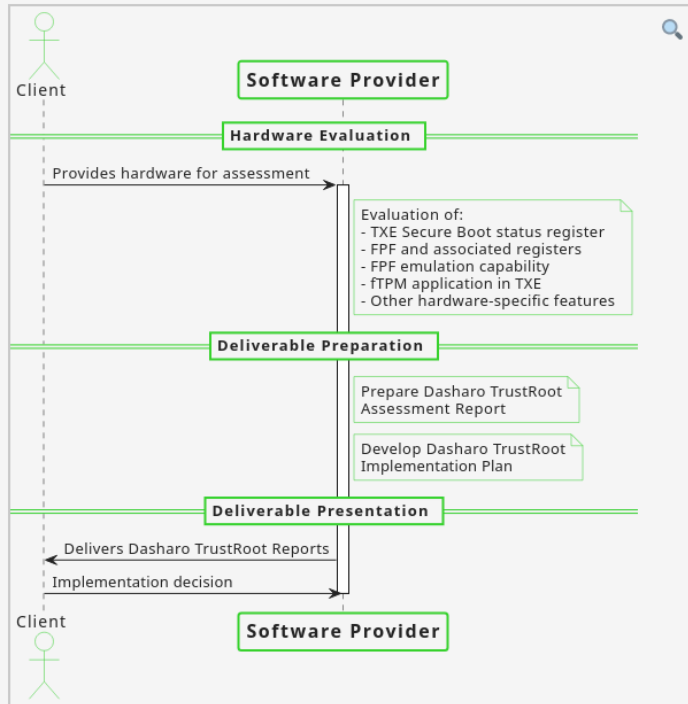
1500,00 €

(ex. VAT)

Introducing our **Dasharo Support Package!** It includes additional engineering time that 3mdeb reserves for the Client's purpose.

This offer presents the 10 hours monthly Support Package. We can offer a variety of Support Packages with customized terms, capacity and technologies (Linux, coreboot). Please [contact us](#) for more details or for different types of Support Packages.

<https://shop.3mdeb.com/shop/services/support-package-dasharo/>



Dasharo TrustRoot Assessment for Intel Bay Trail-based Platforms

5000,00 €
(ex. VAT)

The Dasharo TrustRoot Assessment is a comprehensive product that evaluates the potential for implementing platform firmware security on Intel Bay Trail-based platforms. It uses the expertise and tools of the Dasharo Team to assess the platform's inherent capabilities and the feasibility of integrating TXE Secure Boot technology.

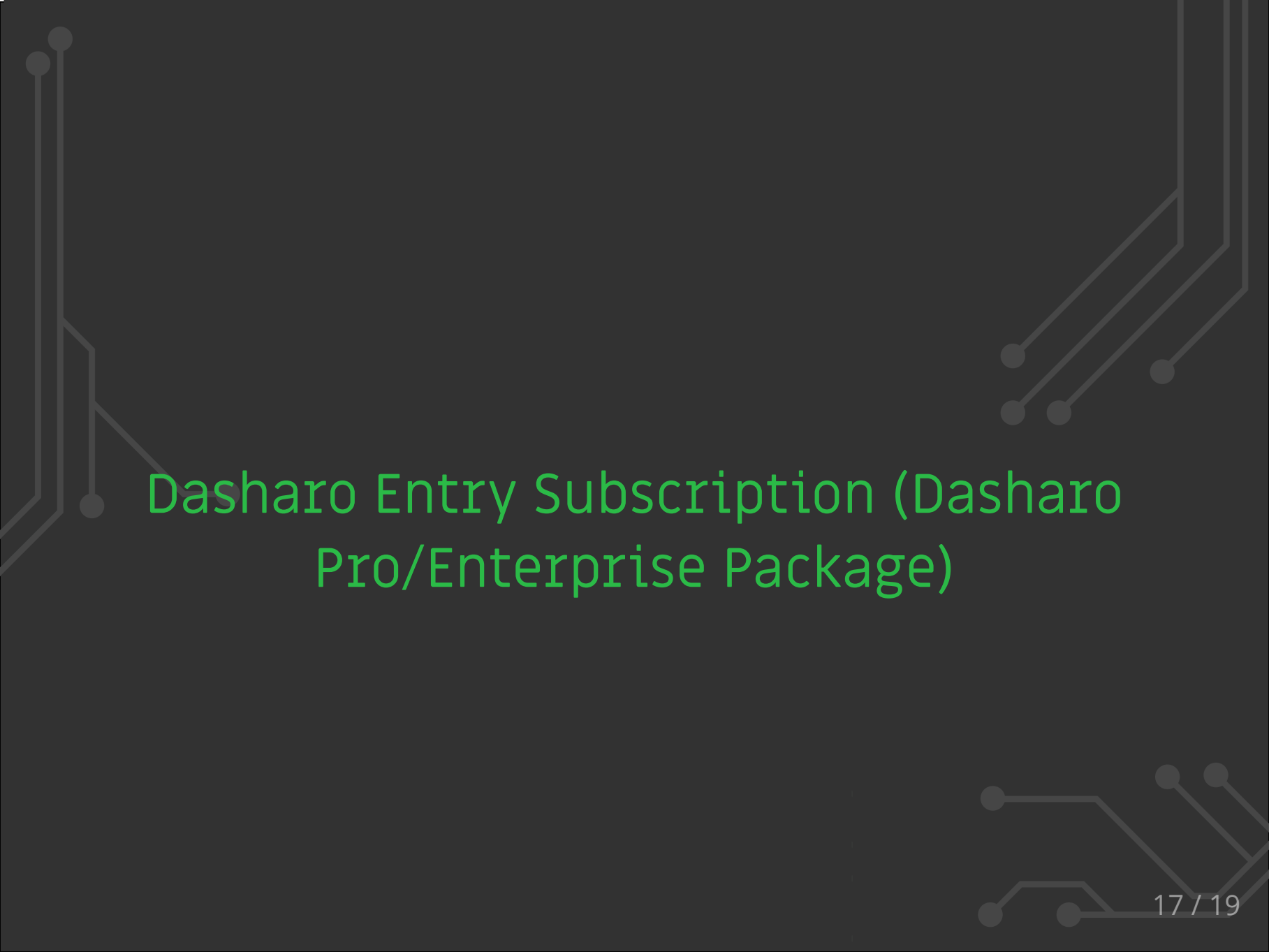
This work includes identifying compatibility issues, potential vulnerabilities, or missing elements in the firmware and hardware areas. The resulting report provides actionable recommendations to address any identified problems.

1

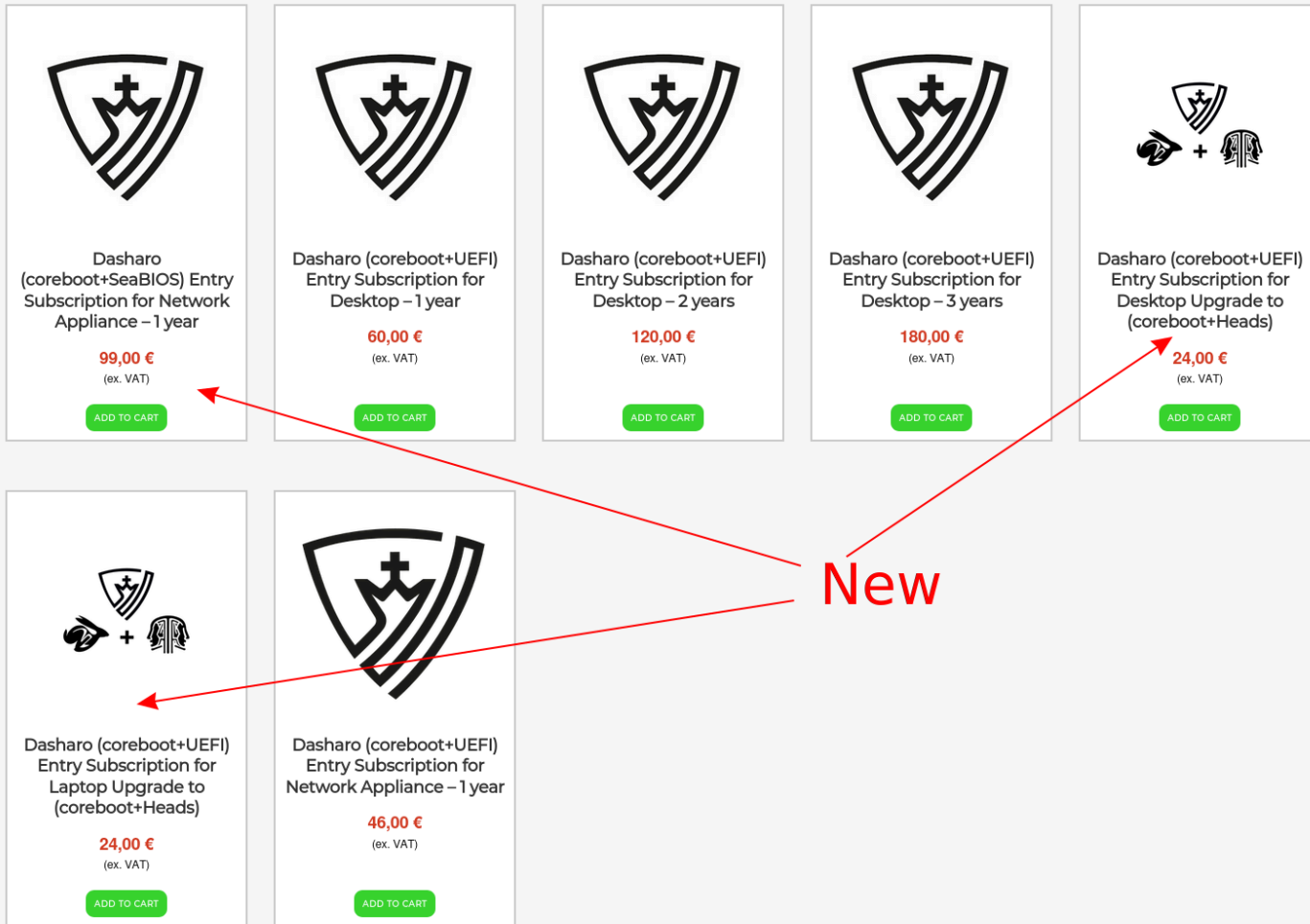
ADD TO CART

Enquiry for this product

<https://shop.3mdeb.com/product-category/services/>

The background features a dark grey color with decorative circuit-like lines in a lighter grey. These lines are located in the corners: top-left, top-right, and bottom-right. Each line consists of straight segments connected by right-angle turns, ending in small circular nodes.

Dasharo Entry Subscription (Dasharo Pro/Enterprise Package)



The image displays seven Dasharo subscription cards arranged in two rows. A red 'New' label is positioned to the right of the cards, with red arrows pointing to the 'Dasharo (coreboot+SeaBIOS) Entry Subscription for Network Appliance - 1 year' card (top row, first), the 'Dasharo (coreboot+UEFI) Entry Subscription for Desktop Upgrade to (coreboot+Heads)' card (top row, fifth), and the 'Dasharo (coreboot+UEFI) Entry Subscription for Laptop Upgrade to (coreboot+Heads)' card (bottom row, first).

Subscription Description	Price (ex. VAT)
Dasharo (coreboot+SeaBIOS) Entry Subscription for Network Appliance - 1 year	99,00 €
Dasharo (coreboot+UEFI) Entry Subscription for Desktop - 1 year	60,00 €
Dasharo (coreboot+UEFI) Entry Subscription for Desktop - 2 years	120,00 €
Dasharo (coreboot+UEFI) Entry Subscription for Desktop - 3 years	180,00 €
Dasharo (coreboot+UEFI) Entry Subscription for Desktop Upgrade to (coreboot+Heads)	24,00 €
Dasharo (coreboot+UEFI) Entry Subscription for Laptop Upgrade to (coreboot+Heads)	24,00 €
Dasharo (coreboot+UEFI) Entry Subscription for Network Appliance - 1 year	46,00 €

The background is dark gray with decorative circuit-like lines in a lighter gray color. These lines are located in the corners: top-left, top-right, and bottom-right. They consist of straight lines, right-angle turns, and small circular nodes, resembling a printed circuit board (PCB) layout.

<https://shop.3mdeb.com>